

# Solutions for Microbial Identification & Characterization

Comprehensive, compliant, and cost-effective microbiology solutions with quick turnaround times from Biolog Lab Services.



## Microbial ID and Enumeration

Utilizing advanced Genotypic, Proteotypic, and Phenotypic methods for comprehensive identification and enumeration.



## Rapid Turnaround Time

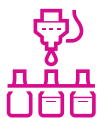
Guaranteed swift results, for big projects and small. Our standard times are some of the fastest in the industry.



## Trusted Results

ISO 17025: 2017 accredited and validated testing services. Registered with the FDA, GDUFA, and cGMP compliant.

Biolog Lab Services provides specialized solutions for microbial contamination identification, enumeration and phenotypic analysis of aerobic and anaerobic organisms for any industry, including:



FOOD & BEV



PROBIOTICS



BREWING



COSMETICS



CSPs



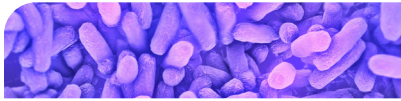
PHARMACEUTICAL



WATER TESTING



AGRICULTURE



## Multiomic Identification

We offer multiple analytical identification methods to help you resolve any contamination concerns:

- Genotypic Sanger DNA sequencing
- Proteotypic MALDI-TOF
- Phenotypic identification with Biolog Identification Test Panels for Aerobic Bacteria (gram-negative and gram-positive), Anaerobes, Yeasts, and Filamentous Fungi



## Enumeration Testing

Accurate microbial counts are essential for quality control. We offer a suite of enumeration testing services, including:

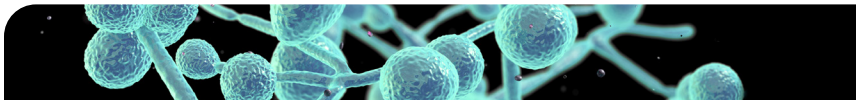
- Total plate count
- Total count of spore-forming bacteria
- Total viable count
- Total yeast count
- Total aerobic or anaerobic count
- Bioburden enumeration
- Custom enumeration



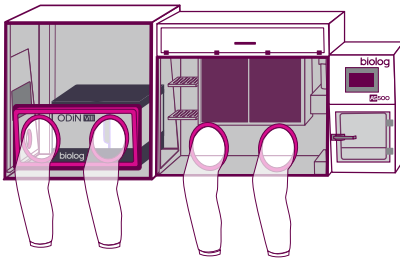
## Foodborne Pathogen Testing

Rapid and sensitive, our ISO-scoped molecular assays can accurately detect the presence or absence of five of the most common food pathogens in a wide variety of matrices:

- *E. coli* O157 (including H7)
- *Listeria*
- *Salmonella*
- *Campylobacter*
- *Cronobacter*



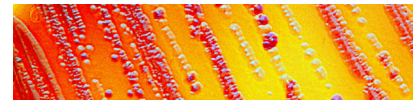
## Phenotypic Characterization and Profiling



Gain deeper insights into microbial behavior with our phenotypic characterization services, in aerobic or fully anaerobic environments.

Our microbiology expertise and panels of specialized plates help you understand the unique traits of microorganisms, enhancing your research and quality control efforts.

Our plates are designed to contain a wide range of metabolic and chemical sensitivity tests for profiling isolates or complex communities such as microbiome or soil samples.



## Other Specialized Microbiology Services

We offer a wide range of specialized microbiology testing services, including:

- Gram staining
- Purity testing
- Biological indicator testing
- Water bioburden testing
- USP <797> Testing Services
- Anaerobic Testing Services
- And more

# biolog

**Biolog Lab Services**  
225 Corporate Blvd., Suite E  
Newark, DE 19702  
+1 302 737 4297

Learn more at [biolog.com/lab-services](https://www.biolog.com/lab-services) or email us at [labservices@biolog.com](mailto:labservices@biolog.com)